

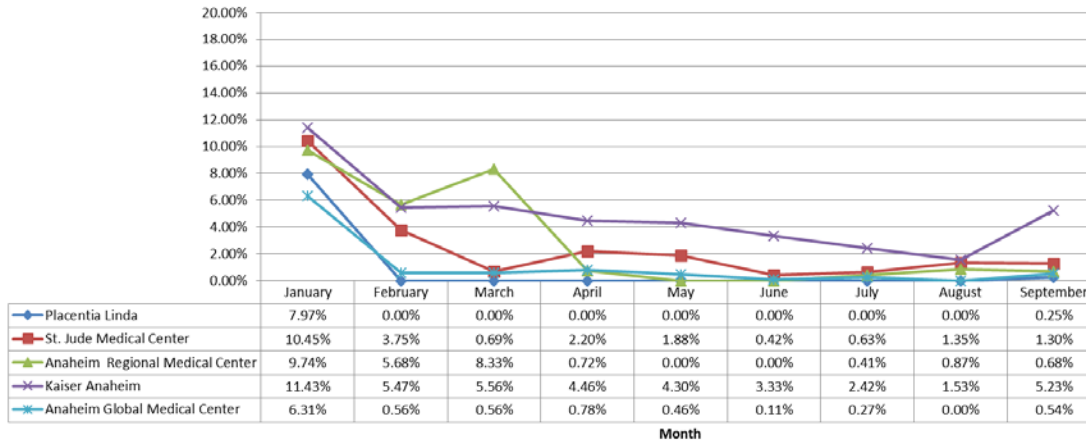


Orange County Emergency Medical Services Diversion Report

January 1 to September 30, 2018

Emergency Receiving Center Diversion- Percent of Time

North Area- 2018 - ERC Diversion



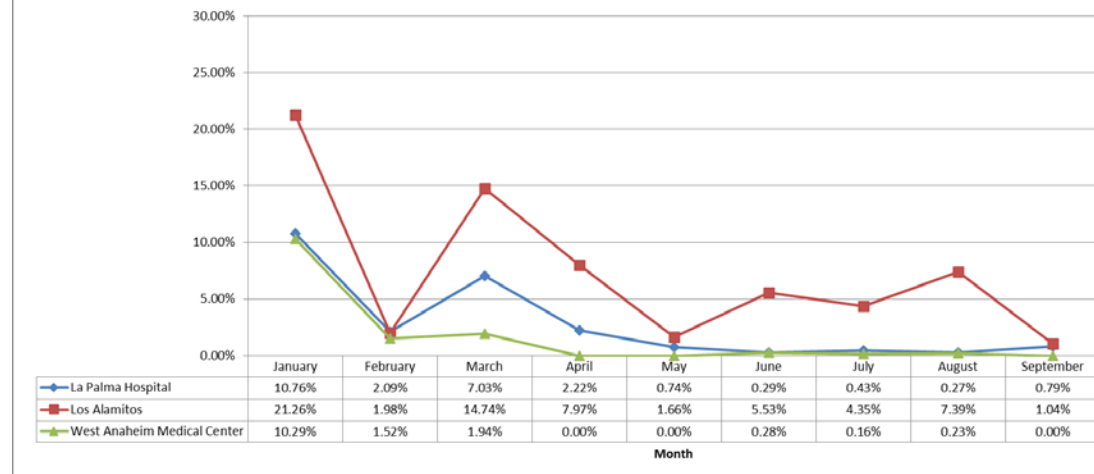
North Area Includes:

- Placentia Linda Hospital
- St. Jude Medical Center
- Anaheim Regional Medical Center
- Kaiser Anaheim
- Anaheim Global Medical Center

West Area Includes:

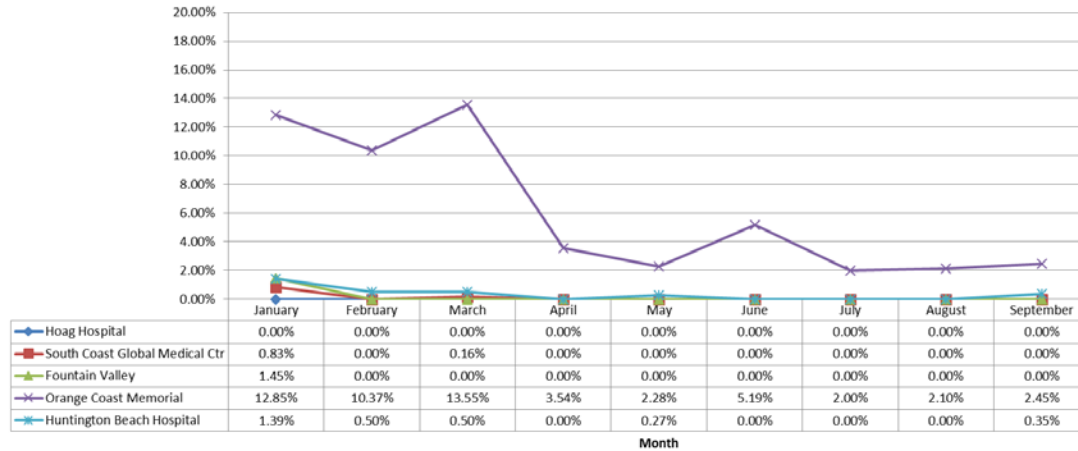
- La Palma Hospital
- Los Alamitos Medical Center
- West Anaheim Medical Center

West Area - 2018 - ERC Diversion



Emergency Receiving Center Diversion- Percent of Time

Coastal Area- 2018 - ERC Diversion



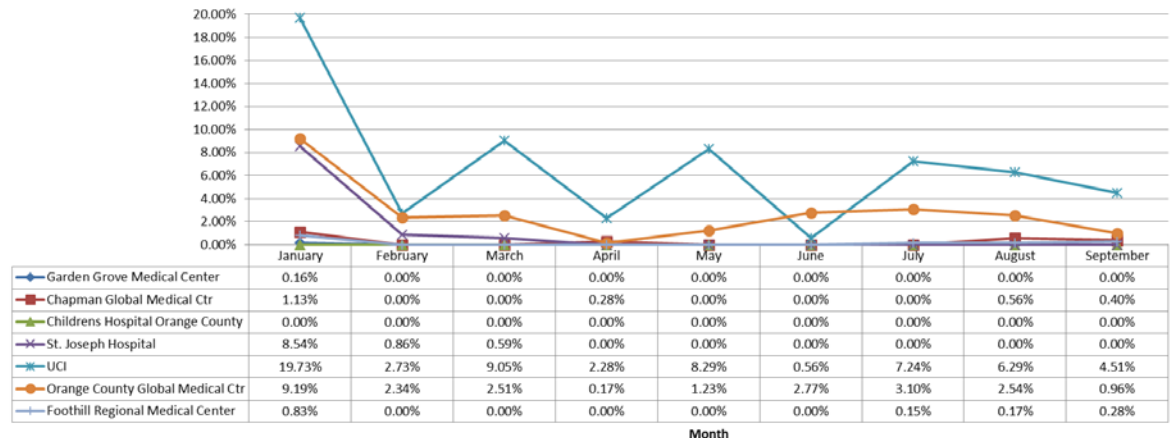
Coastal Area Includes:

- Hoag Hospital Newport Beach
- South Coastal Global Medical Center
- Fountain Valley Hospital
- Orange Coast Memorial Medical Center
- Huntington Beach Hospital

Central Area Includes:

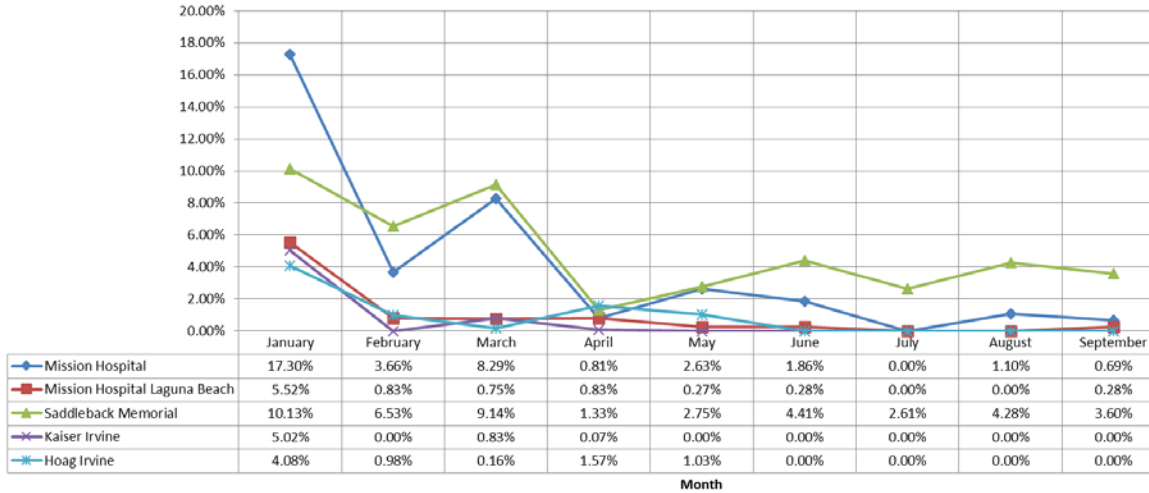
- Garden Grove Medical Center
- Chapman Global Medical Center
- Children's Hospital Orange County
- St. Joseph Hospital
- UCI
- Orange County Global Medical Center
- Foothill Regional Medical Center

Central Area- 2018 - ERC Diversion



Emergency Receiving Center Diversion- Percent of Time

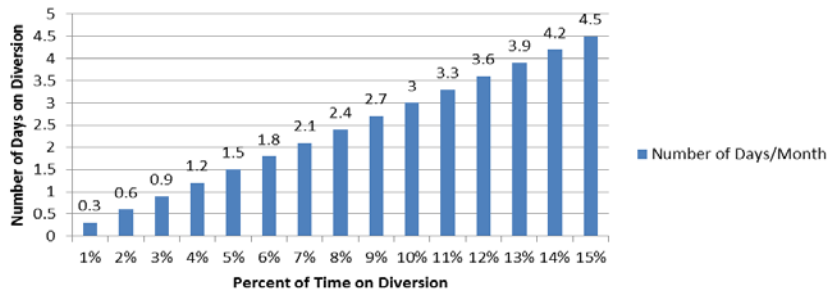
South Area- 2018 - ERC Diversion



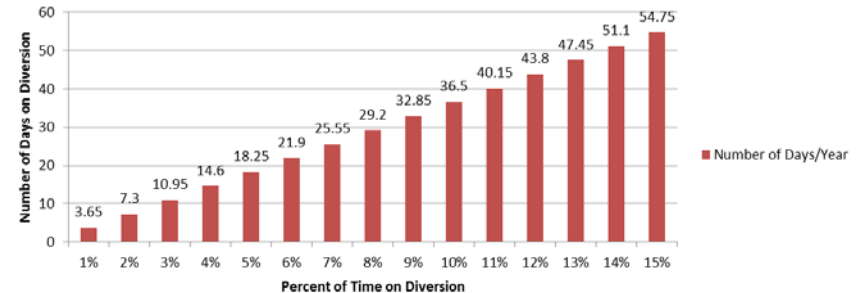
South Area Includes:

- Mission Hospital – Mission Viejo
- Mission Hospital – Laguna Beach
- Saddleback Memorial Medical Center
- Laguna Hills
- Kaiser Hospital – Irvine
- Hoag Hospital - Irvine

Number of Days/Month on Diversion



Number of Days/Year on Diversion



The two charts above demonstrate the monthly and annual impact of diversion represented as a total number of days an ERC would not receive patients given the percent of time of diversion.

Note: Number of days/month based on 30 days in a month

Emergency Receiving Center Diversion- Total Hours

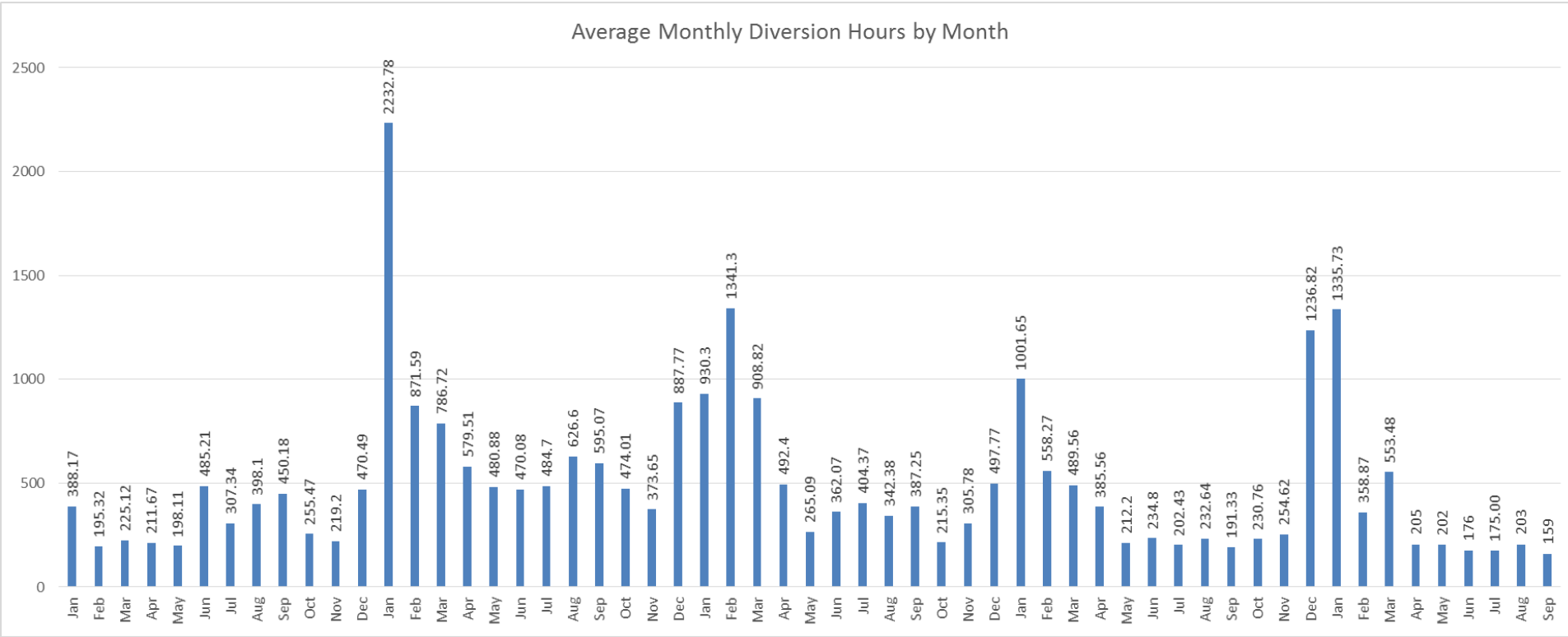
Emergency Receiving Center Diversion Hours 2018												
	Jan	Feb	Mar	Apr	May	Jun	Jul	Aug	Sept	Oct	Nov	Dec
Anaheim Global Medical Ctr	45.43	4	4	5	3	0	2	0	3	0	0	0
Anaheim Regional Med Ctr	70.10	41	6	5	0	0	3	0	4	0	0	0
Chapman Global Medical Ctr	8.13	0	0	2	0	0	0	1	2	0	0	0
CHOC	0.00	0	0	0	0	0	0	0	0	0	0	0
Foothill Regional Medical Ctr	6.00	0	0	0	0	0	1	1	2	0	0	0
Fountain Valley	10.42	0	0	0	0	0	0	0	0	0	0	0
Garden Grove Hospital	1.13	0	0	0	0	0	0	0	0	0	0	0
Hoag Hospital Irvine	29.38	7	1	11	7	0	0	0	0	0	0	0
Hoag Newport	0.00	0	0	0	0	0	0	0	0	0	0	0
Huntington Beach	10.03	4	4	0	2	0	0	0	2	0	0	0
Kaiser Anaheim	82.32	39	40	32	32	24	24	11	37	0	0	0
Kaiser Irvine	36.13	0	6	0	0	0	0	0	0	0	0	0
La Palma Intercommunity	77.48	15	51	16	5	2	3	2	5	0	0	0
Los Alamitos	153.07	14	106	57	12	39	32	55	7	0	0	0
Mission Hospital Laguna	39.73	6	5	6	2	2	0	0	2	0	0	0
Mission Hospital Mission	124.57	26	60	5	19	13	0	7	5	0	0	0
Orange Coast Memorial	92.50	75	98	25	16	37	15	15.5	17	0	0	0
Orange County Global Med	66.13	17	18	1	9	19	24	19	6	0	0	0
Placentia Linda Hospital	57.35	0	0	0	0	0	0	0	1	0	0	0
Saddleback Memorial	72.93	47	66	9	20	31	19.5	32	25	0	0	0
South Coast Global	0.00	0	1	0	0	0	0	0	0	0	0	0
St Joseph	61.47	6	4	0	0	0	0	0	0	0	0	0
St. Jude Medical Ctr	75.22	27	5	15	14	3	4	10	9	0	0	0
UCI	142.08	20	65	16	61	4	54	46.75	32	0	0	0
West Anaheim Medical Ctr	74.12	11	14	2	0	2	1	1.75	0	0	0	0
Total	1335.73	358.87	553.48	207.00	202.00	176.00	182.5	202	159	0	0	0

** Highlighted in Red=Diversion >6%



Emergency Receiving Center Diversion 2014 - 2018

Average Monthly Diversion Hours by Month



2014

2015

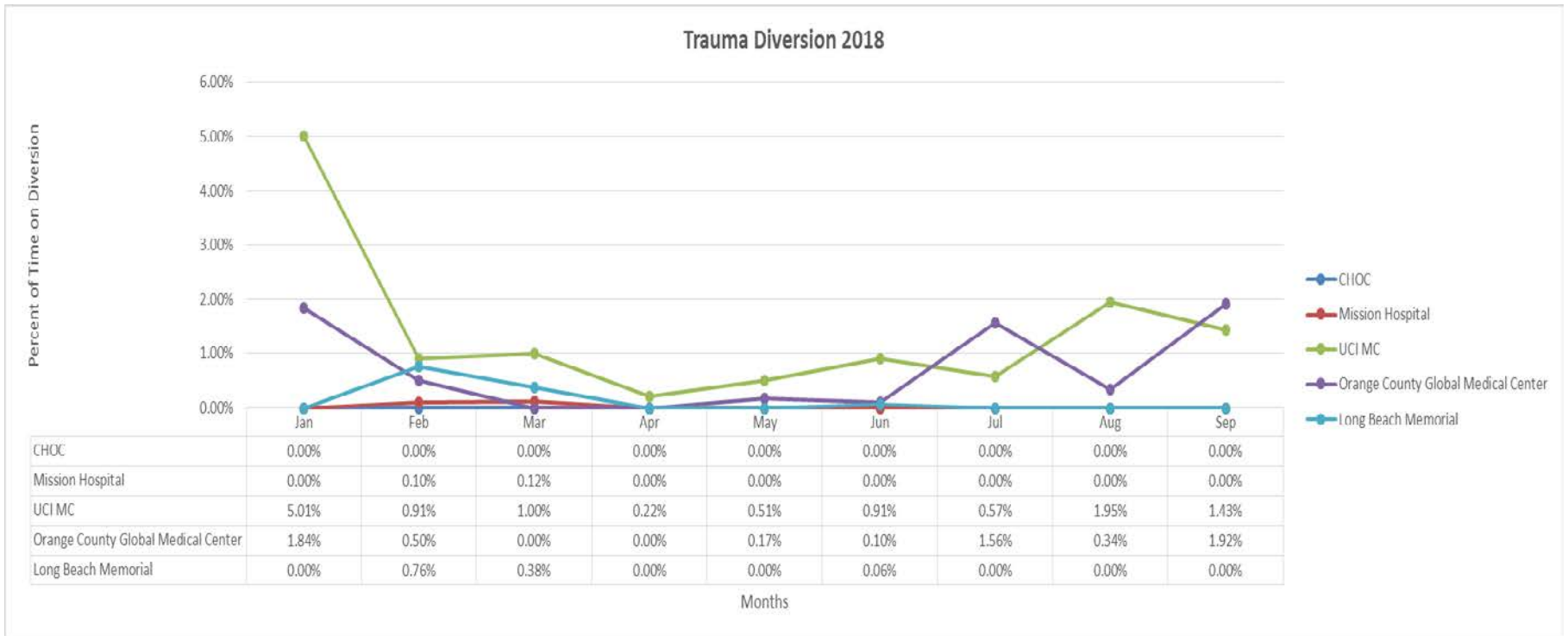
2016

2017

2018



Trauma Receiving Center Diversion- Percent of Time



Cardiovascular Receiving Center Diversion- Percent of Time

CVRC 2018									
	Jan	Feb	Mar	Apr	May	Jun	Jul	Aug	Sept
Anaheim Global Medical Ctr	1.67%	8.33%	0.00%	0.00%	9.88%	21.42%	3.6%	0.0%	0.1%
Anaheim Regional Medical Ctr	0.00%	0.00%	0.00%	0.00%	0.00%	0.00%	0.0%	0.0%	0.0%
Fountain Valley	0.00%	0.00%	0.00%	0.00%	0.00%	0.00%	0.0%	0.0%	0.0%
Hoag Hospital Irvine	0.00%	0.30%	0.00%	0.78%	0.00%	0.00%	0.0%	0.2%	0.0%
Hoag Hospital Newport	0.00%	0.00%	0.00%	0.00%	0.00%	0.00%	0.0%	0.0%	0.0%
Los Alamitos	0.00%	0.00%	0.00%	0.00%	0.00%	0.00%	0.0%	0.0%	0.0%
Orange Coast Memorial Med	0.00%	0.00%	1.75%	0.00%	0.00%	0.00%	0.0%	0.0%	0.0%
Orange County Global Med	1.11%	0.81%	2.82%	0.56%	1.00%	0.00%	1.7%	0.1%	0.8%
Mission Hospital	0.00%	0.00%	0.00%	0.00%	0.00%	0.00%	0.0%	0.0%	0.0%
Saddleback Memorial	0.00%	0.00%	0.00%	0.00%	0.00%	0.00%	0.0%	0.0%	0.0%
St Joseph	0.00%	0.00%	0.00%	0.00%	0.00%	0.00%	0.1%	0.0%	0.0%
St Jude	0.00%	0.00%	0.00%	0.48%	0.00%	0.00%	0.0%	0.0%	0.0%
UCI	0.00%	0.00%	0.00%	0.00%	0.00%	0.00%	0.0%	0.0%	0.0%
West Anaheim Medical Ctr	1.08%	5.51%	0.55%	0.00%	0.52%	4.80%	0.6%	0.3%	1.0%

Highlighted in Red =Diversion Any Amount



Internal Disruption Diversion- Percent of Time

Internal Disruption 2018									
	Jan	Feb	Mar	Apr	May	Jun	Jul	Aug	Sept
Anaheim Global Medical Ctr	0.00%	0.00%	0.00%	0.00%	0.00%	0.00%	0.00%	0.00%	0.00%
Anaheim Regional Med Ctr	0.00%	0.00%	0.00%	0.00%	0.00%	0.00%	0.00%	0.00%	0.00%
Chapman Global Medical Ctr	0.00%	0.00%	0.00%	0.00%	0.00%	0.00%	0.13%	0.00%	0.00%
CHOC	0.00%	0.00%	0.00%	0.00%	0.00%	0.00%	0.00%	0.00%	0.00%
Foothill Regional Medical Ctr	0.00%	0.00%	0.00%	0.00%	0.00%	0.00%	0.00%	0.34%	0.00%
Fountain Valley	0.00%	0.00%	0.00%	0.00%	0.00%	0.04%	0.00%	0.00%	0.00%
Garden Grove Hospital	0.00%	0.00%	0.00%	0.00%	0.00%	0.00%	0.00%	0.00%	0.00%
Hoag Hospital Irvine	0.00%	0.00%	0.00%	0.00%	0.00%	0.38%	0.07%	0.00%	0.00%
Hoag Newport	0.00%	0.00%	0.00%	0.00%	0.00%	0.00%	0.00%	0.00%	0.00%
Huntington Beach	0.00%	0.00%	0.00%	0.00%	0.00%	0.00%	0.00%	0.00%	0.00%
Kaiser Anaheim	0.00%	0.00%	0.00%	0.54%	0.00%	0.00%	0.00%	0.00%	0.00%
Kaiser Irvine	0.00%	0.00%	0.00%	0.55%	0.00%	0.00%	0.00%	0.00%	0.00%
La Palma Intercommunity	0.00%	0.00%	0.00%	0.00%	0.00%	0.00%	0.00%	0.00%	0.00%
Los Alamitos	0.13%	0.00%	0.00%	0.00%	0.00%	0.00%	0.00%	0.37%	0.00%
Mission Hospital Laguna	0.00%	0.00%	0.00%	0.00%	0.00%	0.00%	0.00%	0.00%	0.00%
Mission Hospital Mission	0.00%	0.00%	0.00%	0.00%	0.00%	0.00%	0.00%	0.00%	0.00%
Orange Coast Memorial	0.27%	0.00%	0.34%	0.00%	0.00%	0.00%	0.20%	0.30%	0.00%
Orange County Global Med	0.00%	0.00%	0.00%	0.00%	0.36%	0.55%	1.10%	0.16%	0.00%
Placentia Linda Hospital	0.00%	0.00%	0.00%	0.00%	0.00%	0.00%	0.00%	0.00%	0.00%
Saddleback Memorial	0.00%	0.00%	0.00%	0.00%	0.00%	0.00%	1.30%	0.00%	0.00%
South Coast Global	0.00%	0.00%	0.13%	0.00%	0.00%	0.00%	0.00%	9.40%	0.00%
St Joseph	0.00%	0.00%	0.00%	0.00%	0.00%	0.00%	0.00%	0.00%	0.00%
St. Jude Medical Ctr	0.00%	0.00%	0.00%	0.00%	0.00%	0.00%	0.00%	0.00%	0.00%
UCI	0.00%	0.30%	0.00%	0.00%	0.00%	0.00%	0.00%	0.00%	0.00%
West Anaheim Medical Ctr	0.00%	0.00%	0.00%	0.00%	0.00%	0.00%	0.00%	0.00%	0.00%



Highlighted in Red =Diversion Any Amount 9

CT Diversion Report- Percent of Time

CT Diversion 2018									
	Jan	Feb	Mar	Apr	May	Jun	Jul	Aug	Sept
Anaheim Global Medical Ctr	4.10%	0.00%	0.31%	0.23%	0.00%	0.97%	2.53%	0.17%	0.00%
Anaheim Regional Med Ctr	1.34%	8.78%	5.25%	5.17%	0.67%	1.73%	1.10%	0.41%	0.49%
Chapman Global Medical Ctr	0.00%	0.00%	0.00%	0.19%	0.00%	0.03%	0.41%	2.17%	0.00%
CHOC	0.00%	0.00%	0.00%	0.00%	0.00%	0.00%	0.00%	0.00%	0.00%
Foothill Regional Medical Ctr	0.04%	0.00%	0.19%	0.00%	0.00%	0.00%	0.22%	0.00%	0.24%
Fountain Valley	0.00%	0.00%	0.00%	0.00%	0.00%	0.00%	0.00%	0.00%	0.00%
Garden Grove Hospital	0.43%	0.00%	0.00%	0.63%	0.00%	0.00%	0.00%	0.00%	0.14%
Hoag Hospital Irvine	0.40%	5.09%	1.40%	0.84%	0.00%	0.13%	0.58%	0.00%	0.04%
Hoag Newport	0.00%	0.00%	0.00%	0.00%	0.00%	0.00%	0.00%	0.00%	0.00%
Huntington Beach	0.00%	1.79%	0.00%	1.06%	2.63%	0.00%	9.34%	15.83%	0.00%
Kaiser Anaheim	0.20%	0.23%	0.17%	0.42%	0.19%	0.25%	0.21%	0.00%	0.58%
Kaiser Irvine	0.00%	0.00%	0.00%	0.13%	0.00%	0.00%	0.00%	0.00%	0.00%
La Palma Intercommunity	0.00%	0.00%	0.00%	0.00%	4.93%	0.59%	0.00%	2.10%	0.00%
Los Alamitos	0.20%	0.00%	0.00%	0.00%	0.00%	6.66%	0.00%	0.96%	0.00%
Mission Hospital Laguna	0.00%	1.07%	0.00%	0.00%	0.00%	1.12%	1.32%	0.00%	0.00%
Mission Hospital Mission	0.00%	0.00%	0.00%	0.00%	0.00%	0.00%	0.00%	0.00%	0.00%
Orange Coast Memorial	0.26%	0.00%	0.00%	0.00%	0.00%	0.00%	0.06%	0.00%	0.00%
Orange County Global Med	0.00%	0.32%	0.00%	0.00%	0.00%	0.11%	1.85%	0.00%	1.92%
Placentia Linda Hospital	0.00%	0.00%	0.00%	0.00%	0.00%	0.00%	0.00%	0.00%	0.25%
Saddleback Memorial	0.00%	0.00%	0.00%	0.30%	0.00%	0.00%	0.00%	0.00%	0.00%
South Coast Global	0.67%	0.00%	2.51%	1.44%	6.47%	0.42%	0.00%	0.23%	10.70%
St Joseph	0.00%	0.00%	0.00%	0.00%	0.00%	0.00%	0.00%	0.00%	0.00%
St. Jude Medical Ctr	0.00%	0.00%	0.00%	0.00%	0.00%	0.00%	0.00%	0.00%	0.00%
UCI	0.00%	0.00%	0.00%	0.00%	0.00%	0.00%	0.00%	0.00%	0.00%
West Anaheim Medical Ctr	0.04%	0.00%	0.77%	0.00%	0.12%	0.00%	0.00%	0.00%	0.00%



Highlighted in Red = Diversion Any Amount